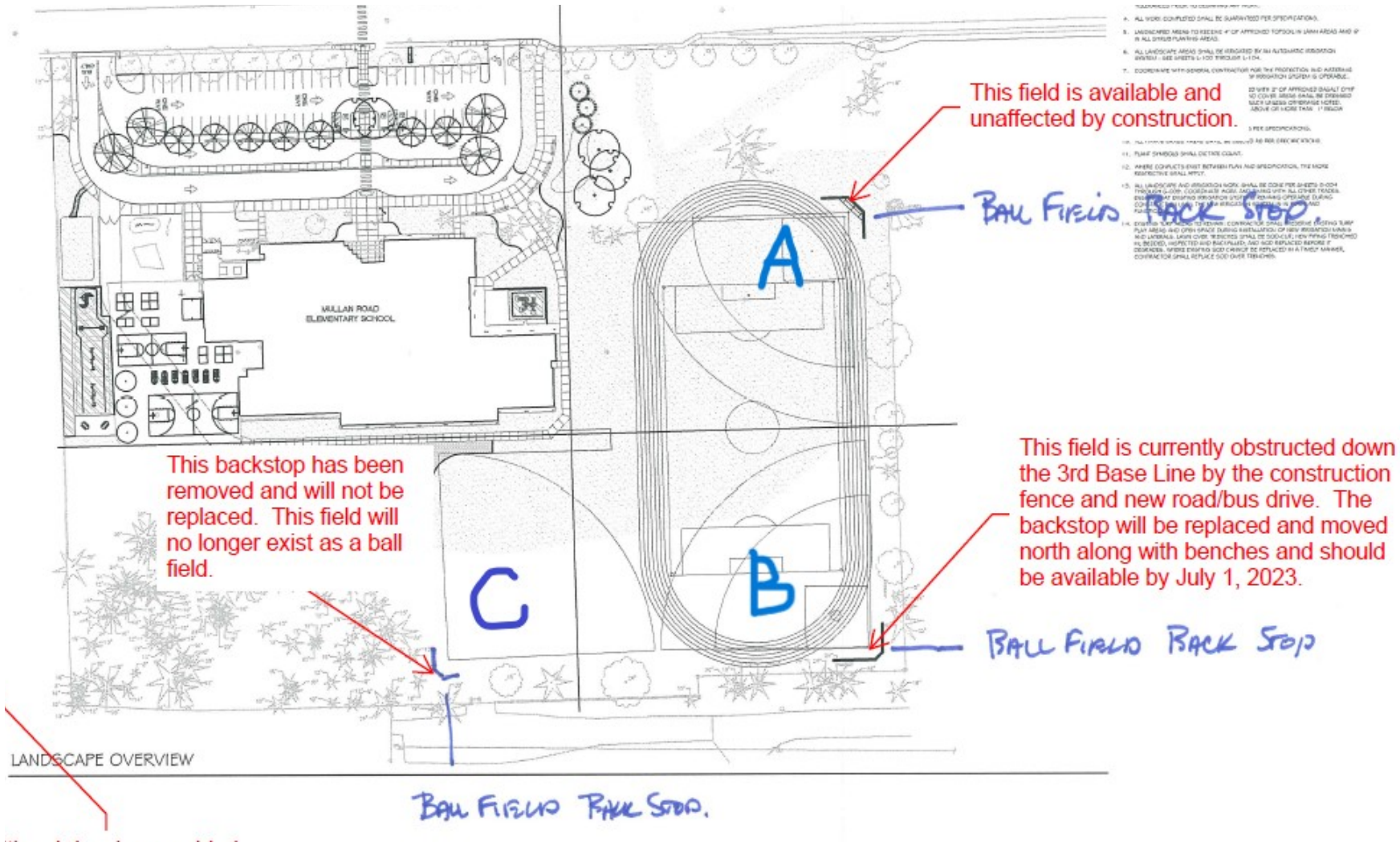


Mullan Road Elementary School
 2616 East 63rd Avenue, Spokane, WA 99223



4. ALL WORK COMPLETED SHALL BE SUBMITTED PER SPECIFICATIONS.
5. LANDSCAPING NEEDS TO BE DONE #1 OF APPROVED TOPSOIL IN VARI AREAS AND #2 IN ALL OTHER PLANTING AREAS.
6. ALL LANDSCAPE AREAS SHALL BE IRRIGATED BY AN AUTOMATIC IRRIGATION SYSTEM - SEE SHEETS S-100 THROUGH S-114.
7. COOPERATE WITH APPROVAL CONTRACTORS FOR THE PROTECTION AND ACCESSIBILITY OF EXISTING UTILITIES IF APPLICABLE.
8. 20 WFT #2 OF APPROVED GRAVEL ON TOP OF CURB SHALL BE INSTALLED UNLESS OTHERWISE NOTED ABOVE OR MORE THAN 1" BELOW.
9. PER SPECIFICATIONS.
10. PER SPECIFICATIONS.
11. PER SPECIFICATIONS.
12. WHERE CONFLICTS EXIST BETWEEN PLAN AND SPECIFICATION, THE MORE RESTRICTIVE SHALL APPLY.
13. ALL LANDSCAPING AND IRRIGATION WORK SHALL BE DONE PER SHEETS FROM THROUGH S-100. COORDINATE ALL WORK WITH ALL OTHER TRADES. EXISTING UTILITIES SHALL BE PROTECTED AND MARKED. ALL UTILITIES SHALL BE PROTECTED AND MARKED. ALL UTILITIES SHALL BE PROTECTED AND MARKED. ALL UTILITIES SHALL BE PROTECTED AND MARKED.
14. EXISTING AND NEW UTILITIES SHALL BE PROTECTED AND MARKED. ALL UTILITIES SHALL BE PROTECTED AND MARKED. ALL UTILITIES SHALL BE PROTECTED AND MARKED. ALL UTILITIES SHALL BE PROTECTED AND MARKED.