

SYSA Soccer Modified Rules of Competition
Outdoor Recreational Soccer
9 v 9 High School Coed

SYSA Mission: "To provide sports activities for all youth where everyone plays, develops skills, is taught good sportsmanship, and learns the value of being a team player."

All competitions shall be governed by the Rules as stated herein in all cases where they are applicable. All members of SYSA shall be governed by these Rules of Competition. These rules are modified from the FIFA Laws of the Game.

Good judgment, sportsmanship and fair play should govern the decisions and actions of all the players, coaches, referees and spectators.

These rules are subject to changes/edits as needed.

Law 1 Field of Play

Dimensions:

The following specifications are applicable to all 9 v 9 competitions administered by SYSA.

The field of play must be rectangular. The length of the touchline must be greater than the length of the goal line.

Length: minimum length is **70 yards** - maximum length is **80 yards**

Width: minimum width is **45 yards** - maximum width is **55 yards**

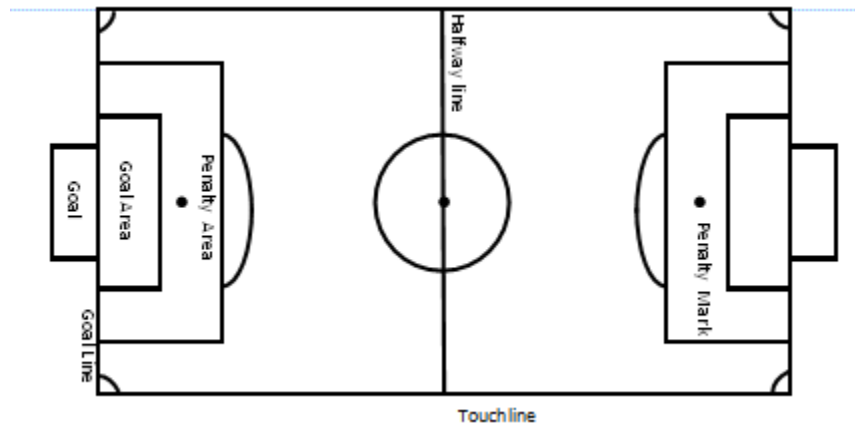
Interior markings include a halfway line, a center circle (**8 yard** radius), a goal area (**5 yards x 16 yards**), a penalty area (**14 yards x 36 yards**), a center circle (8 yard radius), a penalty mark (10 yards), penalty arc (8 yard radius), and corner arcs (1 yard radius).

Goals: **6 x 18 feet** or **7x21 feet** or **8x24 feet** goals will be placed on the center of each goal line. In case permanent goals are not available, flags or cones may be used to mark the goals (18, 21 or 24 feet wide). If cones are used for goals, the top of the player's hands will determine the "imaginary" height of the crossbar. For the players' safety, no one should hang from the crossbar of the goal at any time during a game or practice.

Coaches and players will be on one touchline. Parents and spectators will be on the opposite touchline. Players, coaches and spectators should not be along the goal and penalty area touchlines or behind the goal line.

A game may be postponed at the field site if weather conditions are too hazardous for play. Extreme weather includes lightning, snow or ice on the ground. Rain is not a reason to postpone play.

No dogs or pets allowed near the playing field.



Law 2 The Ball

A size **five (5)** ball will be used for all practices and games.

The home team is responsible for providing the game ball.

Law 3 The Players

The match is played by two teams. The game can be played with **seven (7)** or **nine (9) players**, one who shall be the goalkeeper. 7 v 7 match – minimum of five (5) players to start and continue a match. 9 v 9 match – minimum of six (6) players to start and continue a match.

Maximum team roster is **fifteen (15)**. Each player shall receive 50% of the total playing time.

Substitutions may be made, with the consent of the referee, during any stoppage of play or for an injury.

Substitutions will be allowed in order to give an opportunity for all players to get equal playing time and to balance rather than run up the score.

Players not on the field of play must remain two (2) yards behind the touchline and not along the goal area or behind the goal line.

Printed rosters are not required to be submitted prior to the game but may be requested by the Certified Referee.

Law 4 Player Equipment

Conform to FIFA Laws of the Game.

A minimum “official” uniform is the standard SYSA issued jersey with number.

Shin guards are MANDATORY for practices and games. Socks must be worn up and over the shin guards.

Safety.

A player must not use equipment or wear anything which is dangerous to himself or another player (including any kind of jewelry, with exception of a medical alert bracelet).

All or any member(s) of a team may wear extra protective clothing against the cold, including gloves without dangerous, protruding or hard objects provided that: (1) The proper team uniform is worn outermost; and (2) Any hat should be without peak, bill or dangling or protruding object of any kind; and (3) Referee discretion may be used to determine if an item of protective clothing is considered to go beyond the purpose of providing a means of retaining body heat.

No player shall be allowed to play in any regularly scheduled practice or game with an injury or a known medical condition, which can be communal or aggravated by playing.

Prosthetic Devices require a physician’s permission before a player may play and it must state the player needs to wear the device in order to play. Even then, such devices must pose no danger to other players on the field. The referee’s judgment shall be the final determining factor.

Law 5 The Referee

Games will be officiated by a certified official. In the event that a referee is not present, both captains/coaches will mutually agree upon an official. If the coaches cannot agree, a parent/captain/coach from the home team will referee the first half and a parent/captain/coach from the away team will referee the second half. The parent/coach must refrain from coaching while refereeing.

It is the duty of each official to conduct him/herself in a manner becoming a member of the league, encourage fair competition and good sportsmanship at all times and enforces the rules of the league. Any official who does not comply with the ideals of SYSA Soccer shall be subject to removal from league participation. Neither the use of foul language nor the drinking of alcoholic beverages by an official during the competition shall be tolerated.

Misconduct reports: If a player or coach is cautioned or ejected, the referee must complete a misconduct report within forty eight (48) hours. A player or coach who receives an ejection shall not participate in his/her team’s next game.

The referee will have the responsibility of ensuring that any player bleeding from a wound leaves the field of play.

The player may only return on receiving a signal from the referee who is satisfied that the bleeding has stopped.

Law 6 Other Officials

None.

Law 7 Duration of the Match

Two (2) x thirty (30) minute halves and a five (5) minute half time break.

Law 8 Start and Restart of Play

Conform to the FIFA Laws of the Game, with the exception that the defending team is at least **eight (8)** yards from the ball until it is in play.

Restarting play after temporary delay, there will be a drop ball at the spot where the ball was declared dead. The ball shall be deemed “in play” when the ball has touched the ground.

Law 9 Ball in and out of play.

Conform to the FIFA Laws of the game.

The ball is out of play when it is wholly crossed the goal line or whole touchline, whether it is on the ground or in the air.

The ball is out of play, when the referee has stopped the game.

Law 10 Method of Scoring

Conform to the FIFA Laws of the game.

A goal is scored when the whole of the ball has crossed the whole of the goal line on the ground or in the air between the goal posts and under the crossbar.

In the event that cones are used for markers, the height of the crossbar will be determined by the height of the goalkeeper's hands.

There will be no published team standings and game scores will not be recorded.

Law 11 Offside

No offside will be called in high school coed soccer.

Law 12 Fouls and Misconducts

Conforms to the FIFA Laws of the game with the exception that opposing players must be at least eight (8) yards from the ball.

Play should be stopped when a player acts in a careless, reckless or dangerous manner.

No heading. An indirect free kick is awarded to the opposing team from the spot of the offense.

No slide tackling. An indirect free kick is awarded to the opposing team from the spot of the offense.

No contact will be made with the goalkeeper who has possession of the ball. A goalkeeper with one finger on the ball is considered to have possession.

Law 13 Free Kicks

Conform to the FIFA Laws of the Game with the exception that all opponents are to be at least **eight (8)** yards away from the ball until it is kicked.

Direct and Indirect kicks will be awarded.

A goal cannot be scored from an INDIRECT free kick unless the ball has been played or touched by a player other than the kicker before passing through the goal.

The kicker shall not play the ball a second time until it has been touched or played by another player.

Law 14 Penalty Kicks

Conform to the FIFA Laws of the Game with the exception that the penalty mark will be **ten (10)** yards from the goal line.

Law 15 Throw In

Conform to the FIFA Laws of the Game.

The ball is out of play when it is wholly crosses the whole touchline, whether it is on the ground or in the air.

A goal shall not be scored directly from the throw-in.

If an incorrect throw occurs, a throw in shall be awarded to the opposing team.

Law 16 Goal Kick

Conform to the FIFA Laws of the Game.

When the whole of the ball passes over the whole of the goal line, excluding the portion between the goal posts and under the crossbar (either in the air or on the ground), having last been played by one of the players on the attacking team, a goal kick will be awarded.

A goal kick may be taken from anywhere inside the goal area by any member of the defending team.

The kicker shall not play the ball a second time until it has been touched or played by another player.

The ball is in play when it crosses outside the penalty area.

Law 17 Corner Kick

Conform to the FIFA Laws of the Game with the exception that all of the opposing players are to be at least **eight (8)** yards from the ball until it is kicked.

When the whole of the ball passes over the whole of the goal line excluding that portion between the goal posts and under the crossbar, (either in the air or on the ground), having last been played by one of the defending team, a player of the attacking team shall have a corner kick.

A goal may be scored directly from a corner kick.

The kicker shall not play the ball a second time until it has been touched or played by another player.

Miscellaneous Rules

Players, coaches and spectators shall not be along the penalty area touchlines or behind the goal line.

Team Responsibilities

All teams are responsible for the cleanup of the fields after each game. Please do not leave garbage on the sidelines. Opposing captains/coaches and players are encouraged to shake hands (fist bump or give high fives) after each match.

Parents and Spectators should enjoy and encourage the activity of the players and refrain from coaching during the match.

Captain/Coach Responsibilities

Remember this is just for fun.

The coach/captain shall collect a WYS Medical Release form, available on the SYSA website, signed from the parent/guardian for all players and have access to these forms at all games.

Every player must play in each game at least 50% of the playing time unless they are not able to play due to illness or injury.

In case of injuries during the game, assure that the player is properly attended to. Check his/her condition after the game and follow up with a call to the home in the evening.

In the event an injured player requires medical attention, he/she must have a written release from the doctor before returning to practice or play with the team.

A captain/coach shall complete an Incident Report, available on the SYSA website, and submit to the SYSA office within 48 hours of injury/incidence.

Practices

Optional.

Reviewed July 2018